

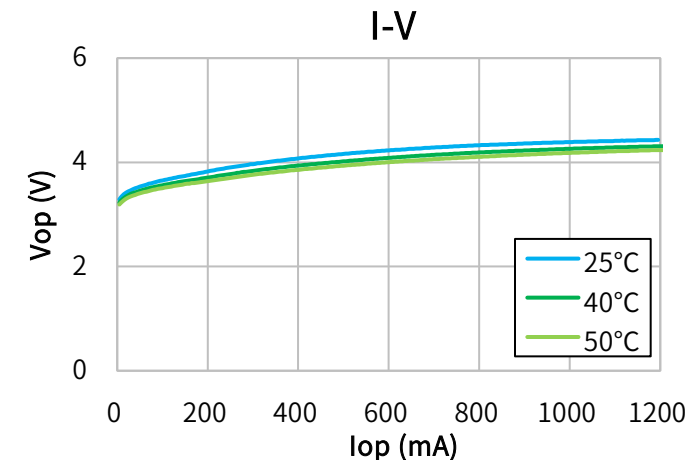
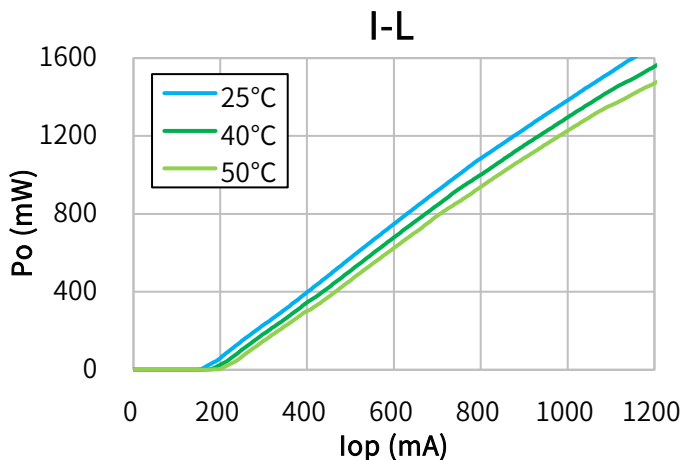


Characteristics

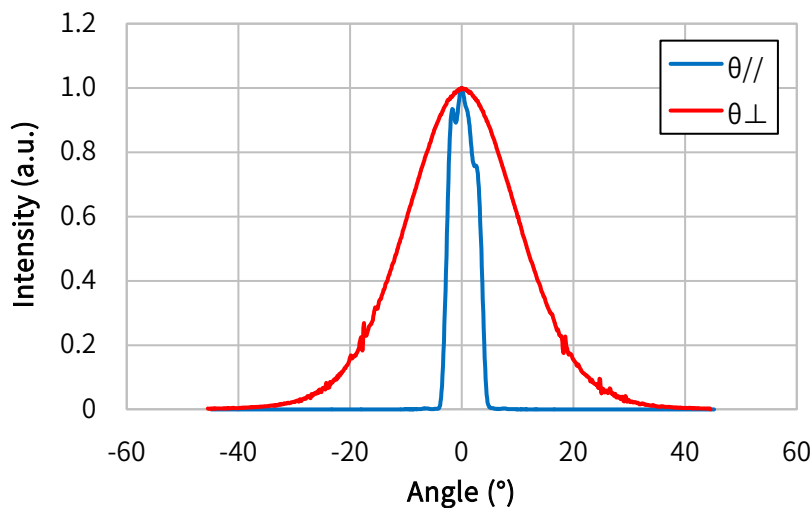
(Tc=25°C, CW)

Item	Conditions	Characteristic value (TYP.)
Wavelength (Peak)	Po=1600mW	450nm
Output [Max]	—	1600mW [1650mW]
Threshold current	—	200mA
Operating current	Po=1600mW	1200mA
Operating voltage	Po=1600mW	5.0V
Far Field (FWHM)	Po=1600mW	$\theta_{//}$ 6.5°, θ_{\perp} 23°
Terminal connections	No.9	φ5.6

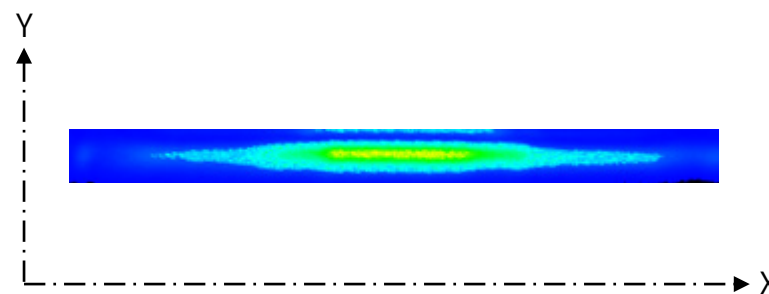
CW I-L, I-V Temperature



Far Field Pattern



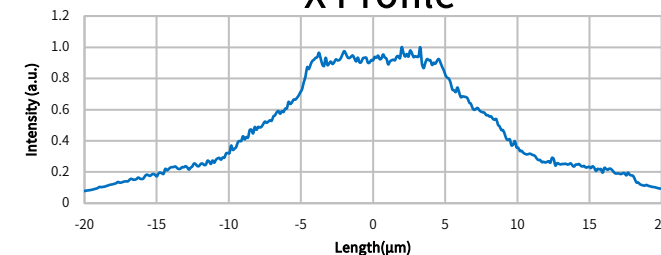
Near Field Pattern



Emitter size

	FWHM (μm)	1/e (μm)	1/e ² (μm)
X	16.3	19.4	35.6
Y	1.3	1.7	2.7

X Profile



Y Profile

