

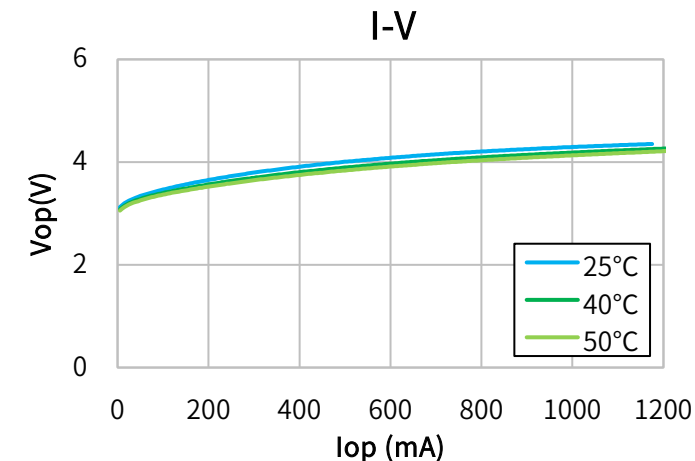
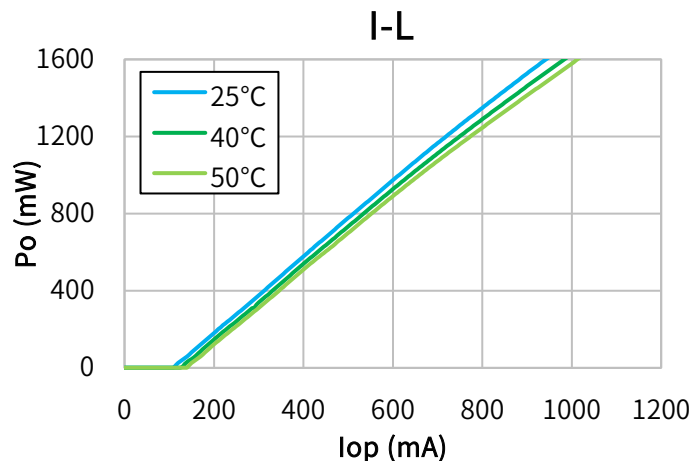


## Characteristics

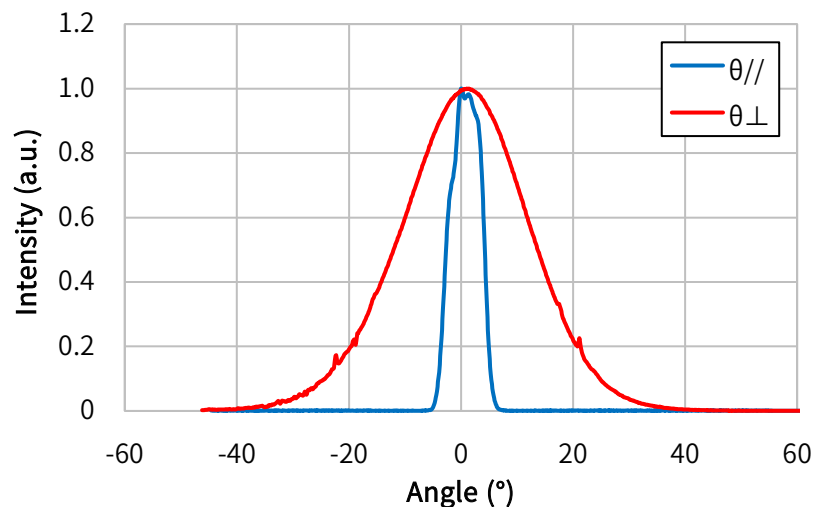
(Tc=25°C, CW)

Item	Conditions	Characteristic value (TYP.)
Wavelength (Peak)	Po=1600mW	450nm
Output [Max]	—	1800mW [2000mW]
Threshold current	—	110mA
Operating current	Po=1800mW	1100mA
Operating voltage	Po=1800mW	4.1V
Far Field (FWHM)	Po=1800mW	$\theta_{//} 7^\circ, \theta_{\perp} 26^\circ$
Terminal connections	<a href="#">No.9</a>	<a href="#">φ5.6</a>

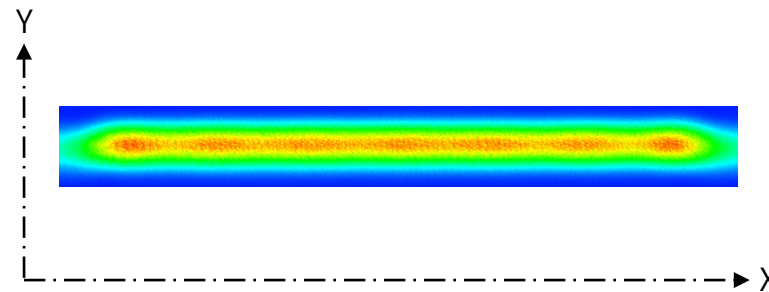
## CW I-L, I-V Temperature



## Far Field Pattern



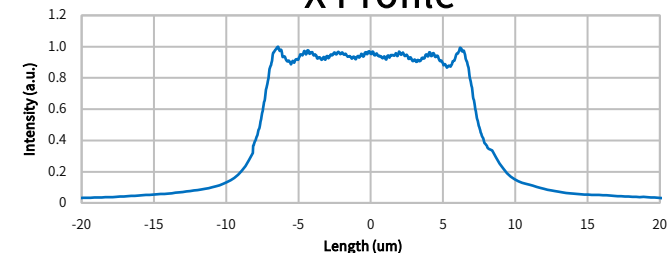
## Near Field Pattern



Emitter size

	FWHM (μm)	1/e (μm)	1/e <sup>2</sup> (μm)
X	15.1	16.1	20.2
Y	0.8	1.0	1.3

## X Profile



## Y Profile

