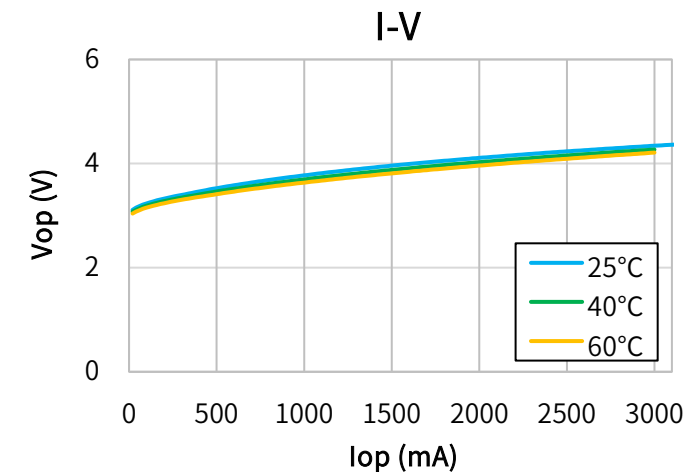
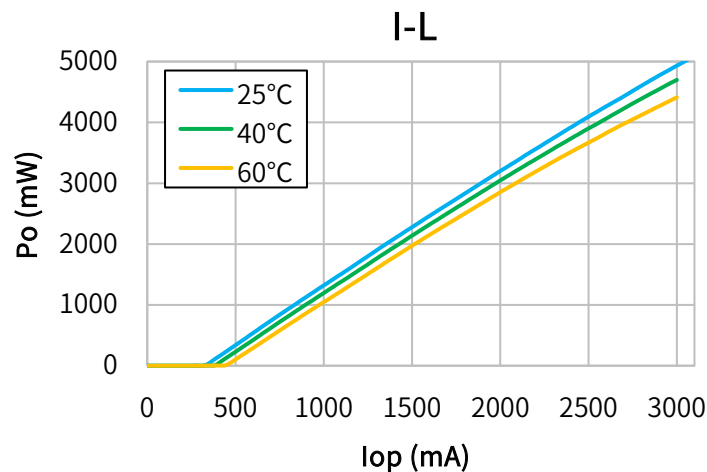


## Characteristics

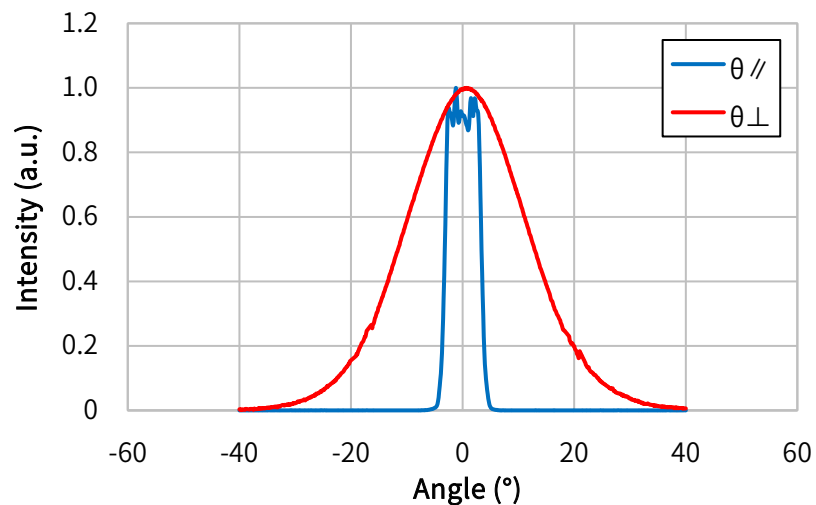
(Tc=25°C, CW)

Item	Conditions	Characteristic value (TYP.)
Wavelength (Peak)	Po=5000mW	450nm
Output	—	5000mW
Threshold current	—	300mA
Operating current	Po=5000mW	2950mA
Operating voltage	Po=5000mW	4.1V
Far Field ( 1/e <sup>2</sup> )	Po=5000mW	θ// 9°, θ⊥ 46°
Terminal connections	<a href="#">No.13</a>	
Package type	<a href="#">φ9.0</a>	

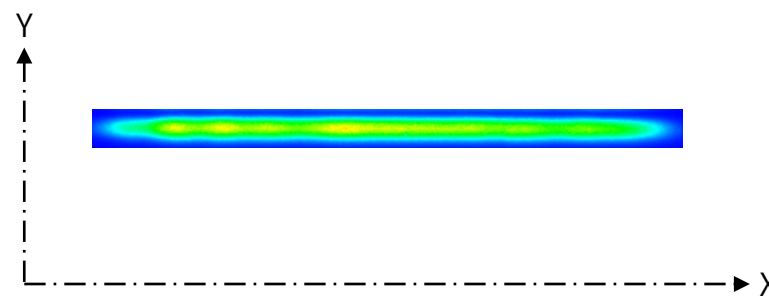
## CW I-L, I-V Temperature



## Far Field Pattern



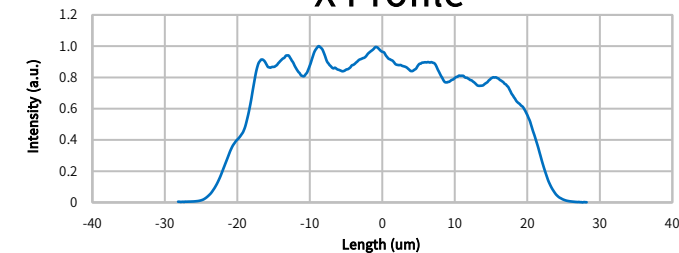
## Near Field Pattern



Emitter size

	FWHM (μm)	1/e (μm)	1/e <sup>2</sup> (μm)
X	39.3	42.0	45.6
Y	1.6	3.0	3.7

## X Profile



## Y Profile

