

# SHARP

Be Original.

LL-S201A  
LCD MONITOR

## Sharp's Multi-Touch Monitor Revolutionises Your Business Style



MHL  
Mobile High-Definition Link

HDMI™  
HIGH DEFINITION MULTIMEDIA INTERFACE

D



# 20-Inch-Class Full HD LCD Monitor with Extreme Touch Sensitivity

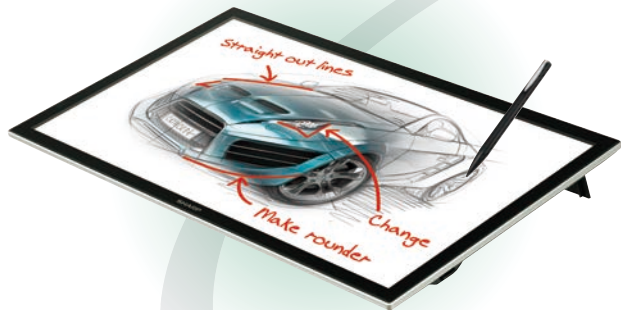
Sharp debuts a highly responsive touchscreen monitor that brings a new dimension of interactive functionality to the workplace. This 20-inch-class touchscreen LCD panel delivers full HD resolution with performance-enhancing UV<sup>2</sup>A technology. Its 10-point multi-touch screen provides extremely quick response for writing and touch gestures. When connected to a device running Windows<sup>®</sup> 8, the monitor serves as a beautifully intuitive interface.

## Various Usage Styles to Match the Way You Work



### Standing Style

A dedicated stand props the monitor at an easy-to-view angle of **75 degrees**, making it ideal for use as a PC monitor or display.



### Pen Writing Style

The monitor can be propped at an angle of **10 degrees** for comfortable, stress-free writing and typing (the latter via the onscreen keyboard).



### Horizontal Style

**Laid flat** and facing upwards, the monitor can be viewed like a sheet of paper or a tablet. Several people can view the monitor at the same time.

## A Wide Range of Applications



Creative Work and Proofreading



Visually Enhanced Discussions



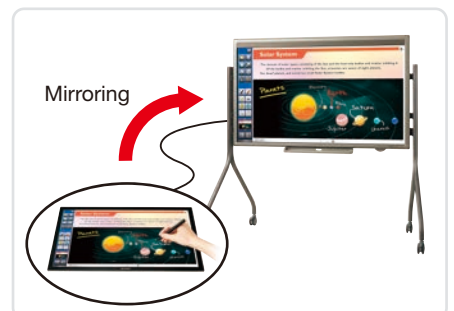
Medical Services and Consultations\*



Education



Face-to-Face Negotiations



Interactive Whiteboard Connectivity

\* Actual product colour differs from that shown in "Medical Services and Consultations" image.



## Touchscreen Capability

### 10-Point Multi-Touch Screen

The LL-S201A is capable of recognising 10 touch points at once. This expands touch interface applications beyond onscreen writing to include gaming, typing via an onscreen keyboard, playing virtual musical instruments, and more.

### Windows® 8 Compatibility

The LL-S201A is compatible with devices running Windows® 8, the latest operating system from Microsoft. Windows® 8 supports smooth and intuitive touchscreen functionality, which can be experienced to its fullest on this beautifully responsive LCD monitor.



## Highly Sensitive Pen Input

### Smooth Onscreen Writing

Incorporating a highly sensitive capacitive touchscreen, the LL-S201A offers precise recognition of onscreen input, whether it originates from a hand or pen. As well as being sensitive enough to detect the bundled pencil-slim touch pen, the LL-S201A can also distinguish pen and hand input, for stress-free onscreen writing.



### 2-mm-Tip Touch Pen

The dedicated touch pen allows smooth and extremely accurate onscreen writing of fine text and lines—it's just like writing on paper. The LL-S201A's pen features an **extra-small 2-mm tip** that enables users to easily underline text, add notations, draw illustrations, and make amendments to onscreen content.



### Support for Microsoft® Office Ink Tools

The LL-S201A supports Microsoft® Office ink functionality, allowing the user to write on Excel® or Word documents displayed onscreen and save the files—notations and all.

### Sharp Pen Software

The bundled Sharp Pen Software lets users enjoy natural handwriting functionality. Once documents have been imported as images and displayed on the touchscreen, users can quickly write and draw directly on the screen surface using the bundled touch pen or a finger. Sharp Pen Software also features an **overlay** mode that enables onscreen handwriting regardless of the application being used.

## User Friendliness

### Palm Cancellation Function

A palm cancellation function prioritises pen recognition, so users can write with the touch pen even if their palm is resting on the screen.



### One-Touch 180-Degree Rotation

A touch of the onscreen **Rotate** icon rotates the screen content **180 degrees**, making the monitor a highly effective tool in face-to-face, across-the-table presentations, consultations, and the like.



## Built with Quality

### Slim-Bezel, Full-Flat Screen

The LL-S201A features a narrow **15.4-mm bezel** and a “full-flat” screen that's seamlessly flush with the bezel. This makes it ideal for touchscreen operations that involve swiping from the edge of the screen—for example, the charm bar in Windows® 8.

### Thin and Lightweight

The LL-S201A weighs **2.3 kg** and measures only **25.2 mm** at its thickest point. This thin, lightweight design makes it easy to move about and enables users to easily switch between standing, pen writing, or horizontal usage styles.



### Superb Image Quality

The LL-S201A's 20-inch-class LCD panel incorporates Sharp's **UV²A\*** technology. This ensures highly efficient use of light from the backlight and prevents light leakage, for the display of truly bright whites and extremely deep blacks. The LL-S201A also boasts 1,920 x 1,080-pixel **full-HD resolution** to ensure that none of the detail or visual impact is lost. Everything from fine text to intricate graphics is rendered with impressive precision.

\* UV²A stands for “Ultraviolet-induced Multi-domain Vertical Alignment,” a photo-alignment technology that ensures uniform alignment of liquid crystal molecules.

## Specifications

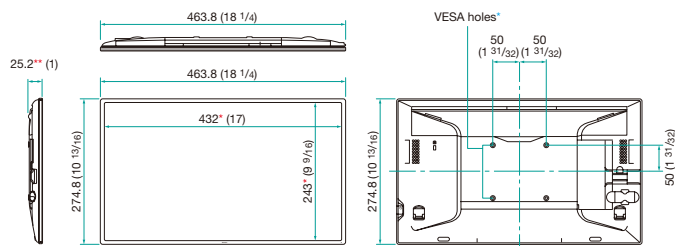
<b>Model Name</b>		LL-S201A
<b>Installation</b>		Landscape / Portrait (Note: Portrait installation not supported when used with stand.)
<b>LCD Panel</b>		20-inch-class (19 1/2-inch [49.5 cm] diagonal) UV <sup>2</sup> A LCD (16 : 9)
	Max. Resolution	1,920 x 1,080 pixels
	Max. Display Colours (approx.)	16.7 million colours
	Pixel Pitch	0.225 x 0.225 mm
	Brightness* <sup>1</sup>	250 cd/m <sup>2</sup>
	Contrast Ratio	3,000 : 1
	Viewing Angles (H/V)	178°/178° (CR ≥ 10)
	Active Screen Area (W x H)	432 x 243 mm
	Response Time	5 ms (grey to grey, avg.)
	Backlight	LED, edge-lit
<b>Touchscreen</b>	Touch Technology	Capacitive touch
	Multi Touch	10 points
<b>Supported OS</b>		Windows® 8* <sup>2</sup> , Windows® 7, Windows Vista®* <sup>3</sup> , Windows® XP* <sup>3</sup>
<b>Computer Input</b>	Plug & Play	VESA DDC2B
<b>Input Terminals</b>		DisplayPort™ x 1, HDMI™/MHL™ x 1
<b>Output Terminals</b>		Micro-USB x 1 (for touchscreen operation), 3.5 mm-diameter mini stereo jack x 1
<b>Built-in Speakers</b>		1 W + 1 W
<b>Mounting</b>		VESA (4 points) 100 x 100 mm pitch
<b>Power Supply*<sup>4</sup></b>		AC 100 V–240 V, 50/60 Hz, DC 19 V
<b>Power Consumption</b>		26 W / 35 W (when charging a connected device via MHL)
<b>Environmental Conditions</b>	Operating Temperature	0°C to 35°C
	Operating Humidity	20% to 80% RH at 35°C (no condensation)
<b>Dimensions (W x D x H) (approx.)</b>		463.8 x 25.2 x 274.8 mm (18 1/4" x 1" x 10 13/16")
<b>Weight (approx.)</b>		Without stand: 2.3 kg (5.1 lbs)      With stand: 2.9 kg (6.4 lbs)
<b>Main Accessories</b>		Stand x 1, touch pen x 1, power cord x 1, AC adaptor x 1, USB cable x 1, CD-ROM, set-up manual

\*<sup>1</sup> Brightness depends on input mode and other picture settings. Brightness level will decrease slightly over the lifetime of the product. Due to the physical limitations of the equipment, it is not possible to maintain a precisely constant level of brightness. \*<sup>2</sup> Supports Finger-only mode. \*<sup>3</sup> Mouse operation only. \*<sup>4</sup> When connecting DisplayPort and USB.

Windows and the Windows logo are registered trademarks of Microsoft Corporation in United States and/or other countries. DisplayPort and the DisplayPort Compliance Logo are trademarks owned by the Video Electronics Standards Association in the United States and other countries. The terms HDMI, HDMI High-Definition Multimedia interface, and the HDMI Logo are trademarks or registered trademarks of HDMI Licensing Administrator, Inc. MHL, the MHL logo, and Mobile High-Definition Link are trademarks or registered trademarks of MHL, LLC in the United States and other countries. All other brand names and product names may be trademarks or registered trademarks of their respective owners.

## Dimensions

### ■ LL-S201A

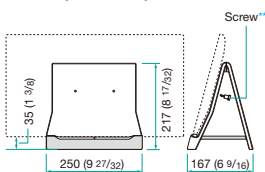


Units: mm (inch)

\* Screen dimensions \*\* Not including protuberances

\* To use the VESA-standard mounting bracket, use M4 screws that are 4 to 6 mm plus the thickness of the bracket.

### ■ Stand (Included)

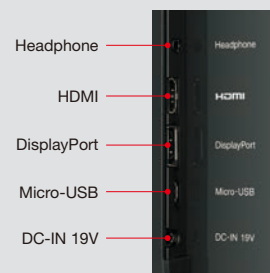


Units: mm (inch)

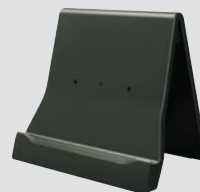
\*\* Screw included

Note: To be assembled by the user (requires no special tools).

## Input/Output Terminals



## Main Accessories



Stand



Touch Pen

DESIGN AND SPECIFICATIONS ARE SUBJECT TO CHANGE WITHOUT PRIOR NOTICE.

Distributed by:

# SHARP